

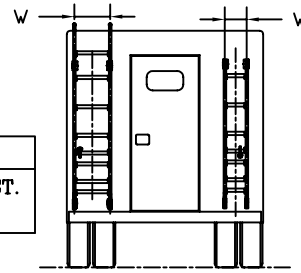
ZIAMATIC QUIC-LADDER ORDER FORM

ORDERED BY _____

PO NUMBER _____

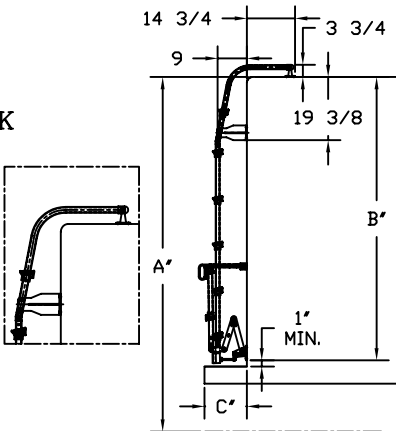
STEP ONE: SELECT ONE BOX FOR LADDER WIDTH

	<input type="checkbox"/>	<input type="checkbox"/>	<input type="checkbox"/>
W	10 3/4" CENTER DIST. (12" MODEL)	13 9/16" CENTER DIST. (15" MODEL)	17 9/16" CENTER DIST. (STANDARD)

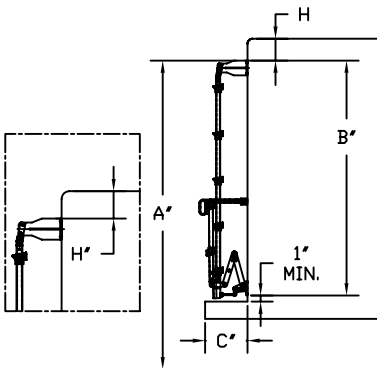


STEP TWO: SELECT TERMINATION STYLE OF LADDER AND FILL IN THE DIMENSION BOX NEXT TO THE STYLE YOU NEED

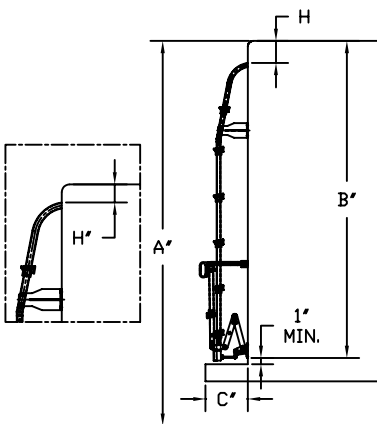
CHECK ONE



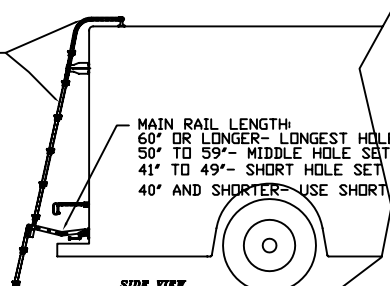
SYM	DESCRIPTION	DIM.(INCHES)
A	GROUND TO TOP OF TRUCK	-----
B	TOP OF TRUCK TO BOTTOM OF LOWER BRACKET (LOWER BRKT. MOUNTS 1 "(MIN) ABOVE BUMPER)	-----
C	BACK OF TRUCK TO REAR OF BUMPER	-----
H	TOP RAIL TERMINATION TO TOP OF TRUCK	N/A



SYM	DESCRIPTION	DIM.(INCHES)
A	GROUND TO TOP OF LADDER	-----
B	TOP OF LADDER TO BOTTOM OF LOWER BRACKET (LOWER BRKT. MOUNTS 1 "(MIN) ABOVE BUMPER)	-----
C	BACK OF TRUCK TO REAR OF BUMPER	-----
H	TOP RAIL TERMINATION TO TOP OF TRUCK	-----



SYM	DESCRIPTION	DIM.(INCHES)
A	GROUND TO TOP OF TRUCK	-----
B	TOP OF TRUCK TO BOTTOM OF LOWER BRACKET (LOWER BRKT. MOUNTS 1 "(MIN) ABOVE BUMPER)	-----
C	BACK OF TRUCK TO REAR OF BUMPER	-----
H	TOP RAIL TERMINATION TO TOP OF TRUCK	-----

SLIP RESISTANT
POWDER COATED RAIL

MAIN RAIL LENGTH:
60" OR LONGER- LONGEST HOLE SET
50" TO 59"- MIDDLE HOLE SET
41" TO 49"- SHORT HOLE SET
40" AND SHORTER- USE SHORT SCISSOR

STANDARD
SCISSOR

MAT'L	FINISH	ZIAMATIC CORP. YARDLEY, PENNA.	
UNLESS NOTED STA. TOLERANCES DECIMAL +/- .005 ANGLES +/- 1° FRACTIONAL +/- 1/64 DIMENSIONS ARE IN INCHES		TITLE QUIC LADDER CUSTOMER INFO FORM	
CONFIDENTIAL <small>THIS DRAWING IS THE PROPERTY OF ZIAMATIC CORP. IT CONTAINS INFORMATION RESEMBLING AN INVENTION. THIS DRAWING AND THE INFORMATION HEREON IS NOT TO BE USED IN ANY MANNER TO REPRODUCE OR IMITATE THE INFORMATION. THIS DRAWING IS NOT TO BE REPRODUCED OR COPIED WITHOUT PERMISSION AND IS TO BE RETURNED WITH ANY COPIES ON DEMAND.</small>		DATE 11/09/2009 DR. VBM DR. ND	SCALE (D) APPV'D. 3096005 000 CUST FORM
		REV	